

# Gravimetric Dosing System GDS-Eco

## Solutions ...

Combining the well-proven Octagon throughput measurement and screw feeder units, the GDS-Eco system offers highest performance in gravimetric dosing and extruder control. Both main material and additives are measured by loss of weight, a process assuring highest accuracy and reliability.

## ... for extrusions lines ...

The GDS-Eco system is fitted directly at the material intake of the extruder thereby eliminating any demixing of different materials. An additional mixer is not required. The sophisticated control concept prevents any overdosing after a change of dosing screw.

## ... continuous and accurate.

The dosing system GDS-Eco is equipped with its own process electronics. Via a fieldbus interface it connects to a central computer where the target and actual data are displayed. Several display modules are available for the user.



### Fully-met requirements:

- Highest measuring and dosing accuracy
- High degree of linearity over entire measuring range
- Secure in functioning
- Perfectly adaptable by modular design

### Why use gravimetrics?

- Accurate proportions of all component materials
- Evenly distributed colouring
- Reproducible film quality
- No demixing of components as dosing units are fitted directly at material intake of extruder

### Optimal integration

- Mechanical and electrical installation fast and simple
- Communication via fieldbus interface (such as a profibus)
- Easily integrated by simply connecting BUS cable, compressed air and power supply
- „Plug and Run“

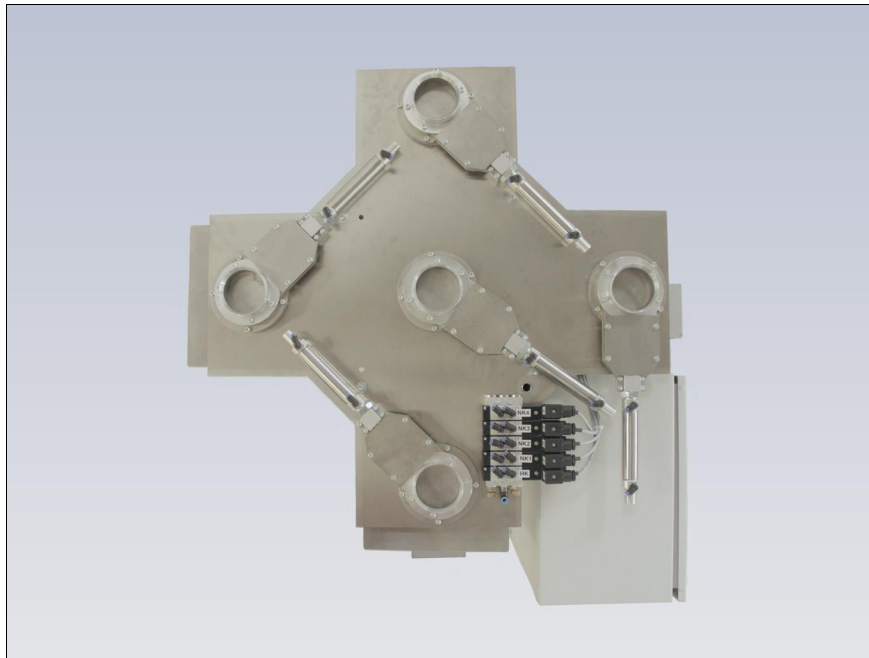
# Octagon dosing modules: For highly advanced technology in extrusion control

## Field of application:

Fully gravimetric dosing system GDS-Eco can be applied for mono- and coextrusion of film, sheets, tiles, pipes and profiles.

The GDS-Eco follows the rule of continuous dosing with the highest precision of performance according to "loss-in-weight" principle.

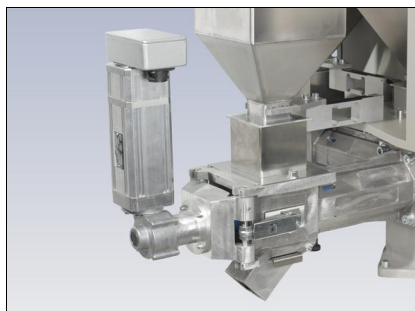
The GDS-Eco dosing system may be used as a stand-alone system or serve as a module for fast and simple integration in a SPS or fieldbus system. The GDS-Eco can be extended to up to 6 components per extruder.



Top view

## Simple handling:

A change of dosing screws is simple and requires little effort. After every change, the system automatically recognises screw size and proceeds with reconfiguration of the basic parameter for the component.



Dosing drive



Dosing drive (open)

## Wide selection of dosing screws

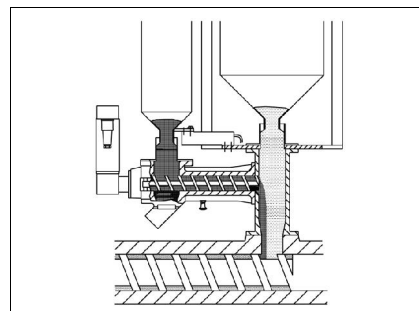
Six screw sizes with appropriate sleeve are available for a through-put range of 0.3 to 340 kg/h. For easy recognition, screws and sleeves are marked with a colour code.



## Accuracy with continuous dosing

Continuous dosing of additives directly at the material intake of the extruder ensuring

- no "loss of blend" of components
- evenly distributed coloring
- highest blending accuracy



Octagon  
Process Technology GmbH  
Nuernberger Straße 119  
D-97076 Wuerzburg

Phone +49 931 27 96 70  
Fax +49 931 27 47 19

contact@octagon-gmbh.de  
www.octagon-gmbh.de