



# Film thickness measurement unit GPA-Cap with capacitive sensor

This unit is used for measuring the thickness profile of a film sample. It allows automatic measurement of a cross section taken from blown or cast film.

The GPA-Cap is equipped with two sensors, one capacitive without contact, the other a micrometer. Calibration of the capacitive sensor is achieved automatically by both sensors

measuring the film sample.

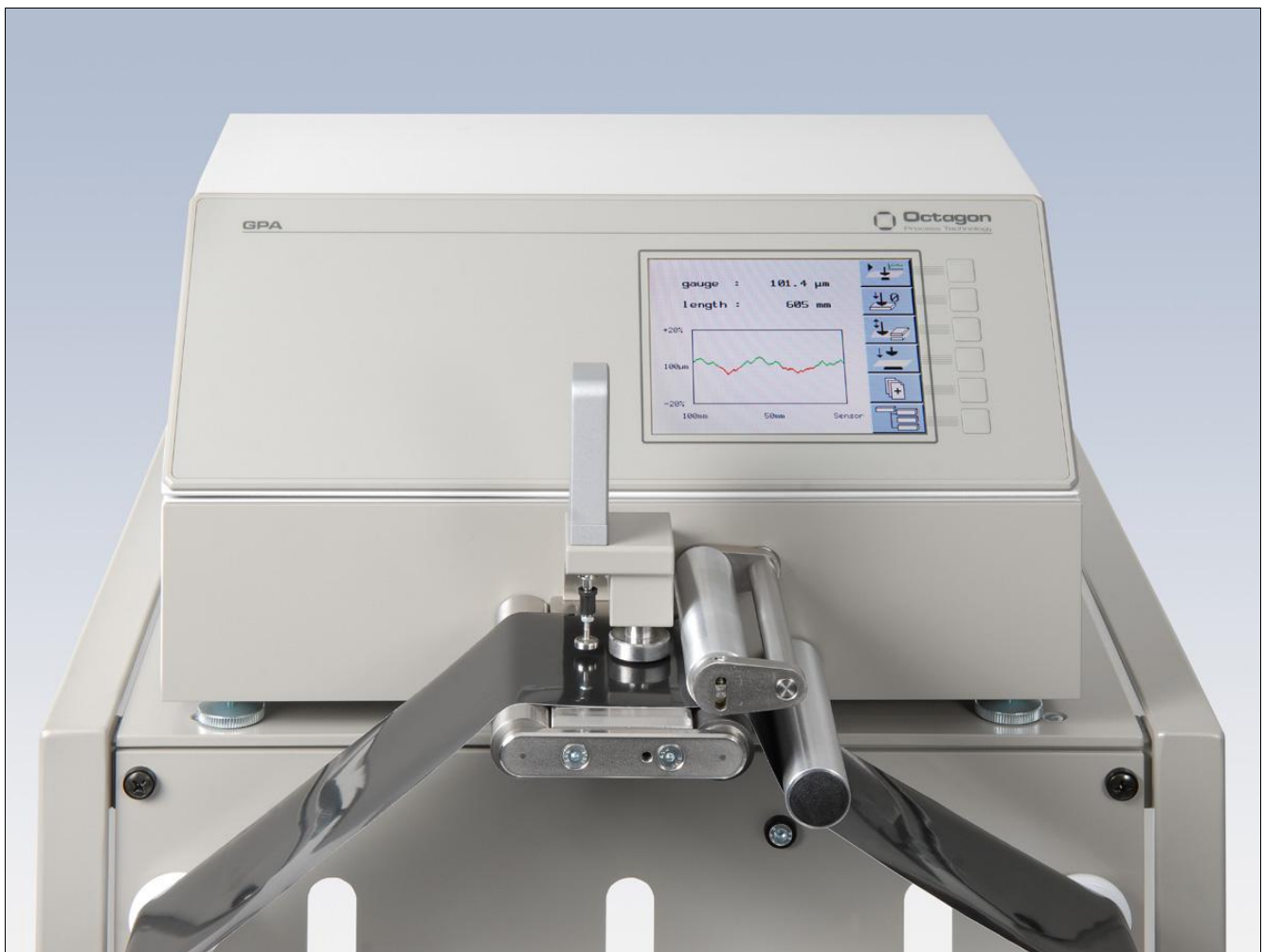
Comfortable use is assured by auto-movement of mobile parts.

The GPA-Cap is operated via its touch-screen display and the PC Software GPA-Win, which is included in the scope of supply.

A support rack with guide rollers for the film samples ensures easy handling.

## Measurement in compliance with ISO 4593

In addition to capacitive measurement, the GPA-Cap allows measurement in compliance with established international standards DIN 53370 / ISO 4593.



### Your advantage:

- Easy to use
- Simple calibration process
- Allows automatic measurement after film has been loaded.
- Measurement without contact
- No wear of measuring part
- Suitable for measuring as per ISO 4593

### Technical features:

- Ideal film band width 100 mm
- Max. sample length 20 m
- Measuring speed 15 - 80 mm/s
- Measuring range 0 - 300 µm
- Resolution of sensor 0.1 µm
- Micrometer precision  $\pm 0.2 \mu\text{m}$
- Force acting against 0.3 - 0,5 N

### Display:

- Thickness of actual measurement
- Graphical display of the film thickness of the last 720 mm measured
- Graphical display of the calibration procedure

# Octagon measuring equipment: Leaders in off-line thickness profile measurement for 25 years

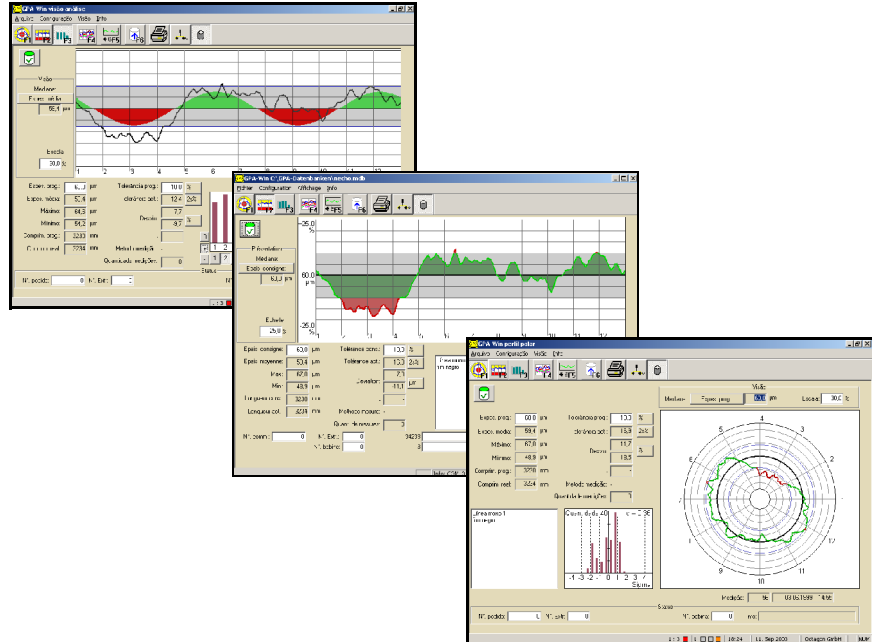
## Software:

### GPA-Win for Windows®

Entering set data is made easy using the PC keyboard. At the end of a measurement, the profile, the set and actual data as well as evaluations are displayed on the monitor and memorised in a file.

## Display:

- Cartesian chart
- Polar chart
- Gauss distribution chart
- Tolerances (% ,  $\mu\text{m}$ , 1-, 2-, 3-Sigma)
- Fourier analysis
- Profile analysis
- Superimposed profiles



Selection of screen displays

## Easy to use

### Reset to zero:

This is achieved automatically by pressing the RESET button before any film has been placed into the sensor.

### Calibration:

The calibration will be done automatically in parallel to the capacitive measurement related to the specifications of a norm concordant measurement.

### Measurement:

A button is provided for starting and stopping the measuring process. On entering a film length, the unit will stop automatically. For measurement as per ISO standards, the number of measured points needs to be entered.

## Accessory:

### Support rack with guiding rollers



The support rack is equipped with a number of retractable guiding rollers to ensure stable transport of the film sample.

The special arrangement and number of rollers allows easy loading of film samples with different lengths up to 6 meters. For greater lengths an additional support rack is available.

Octagon  
Process Technology GmbH  
Nuernberger Straße 119  
D-97076 Wuerzburg

Telephone +49 931 27 96 70  
Fax +49 931 27 47 19

contact@octagon-gmbh.de  
www.octagon-gmbh.de  
www.octagon-gmbh.de

Support rack with guiding rollers