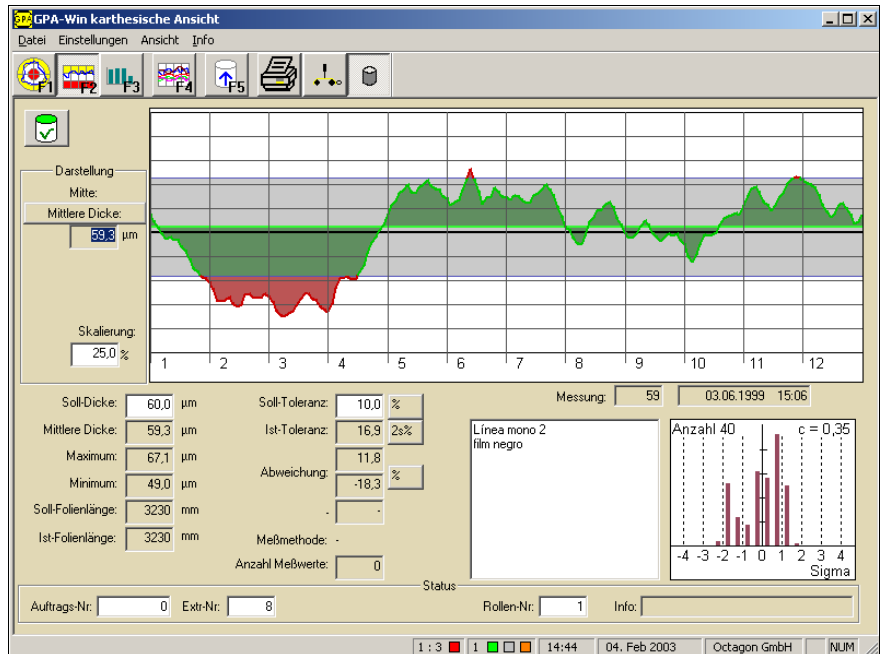


# PC software GPA-Win for Windows®

## General:

This PC software has been developed specially for the GPA units. Provided the PC is connected to the GPA via a serial interface\*, all set data for the measurement of a film sample may be entered via the PC keyboard. At the end of a measurement, all measuring data and the profile are memorised, either automatically or by request. Even without being connected to a GPA, the software allows profiles already saved in a data base to be processed and evaluated.

\*RS232 or USB depends on the unit



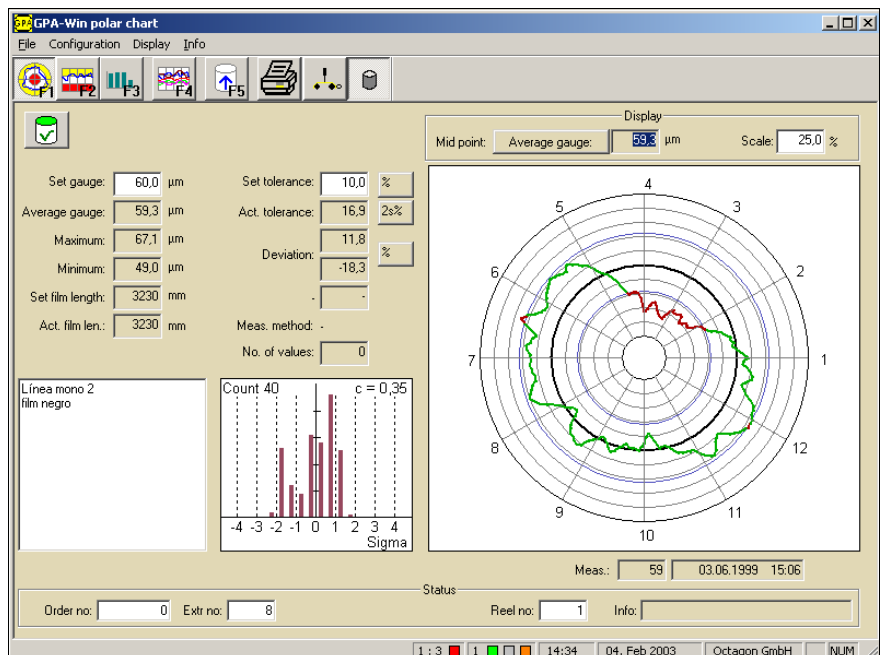
Cartesian chart

## Memorised data:

The use of filters allows any older measuring data to be found easily in the Access data base. Any such data may also be used by the customer in his own programmes for further processing.

## Display:

- Cartesian chart
- Polar chart
- Gauss distribution chart
- Tolerances (% , µm, sigma 1, 2 and 3)
- Fourier analysis
- Profile analysis
- Superimposed profiles



Polar chart

## Your advantage:

- Presentation of charts
- Automatic saving of data
- Extensive evaluations
- Aid for investigating problems on extrusion line
- Input of set data via PC

## Hardware requirements:

- 1 GHz CPU
- 256 MB RAM minimum
- VGA-graphics adapter board with at least 1024 x 768 pixels
- 1 GB hard disk minimum
- Serial interface (COM1 - COM99 ) and one unoccupied USB port

## Software requirements:

- Microsoft Windows 2000, XP, 7(32/64)
- (not suitable for XP64 and Vista)

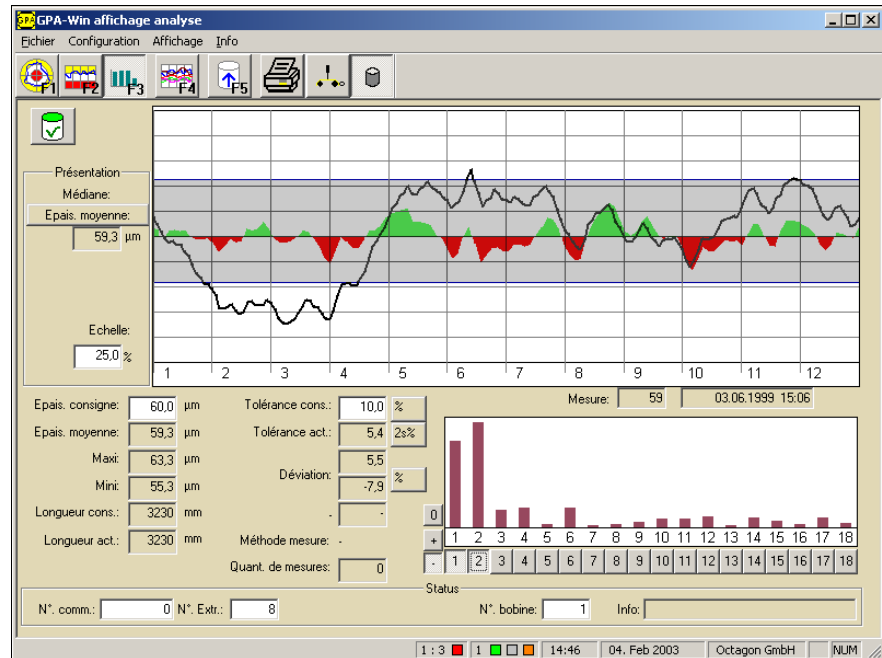
# Octagon measuring equipment: Leaders in off-line thickness profile measurement for 25 years

## Profile analysis:

It analyses the gauge profile for faults with symmetrical influencing variables. This allows to identify which part of the extrusion line is causing a fault and to what extent it affects the quality of the film. Concerted adjustments on the line to correct the profile are therefore possible.

## Gauss distribution:

It specifies the number of measuring points outside the tolerance limit and presents their statistical distribution.

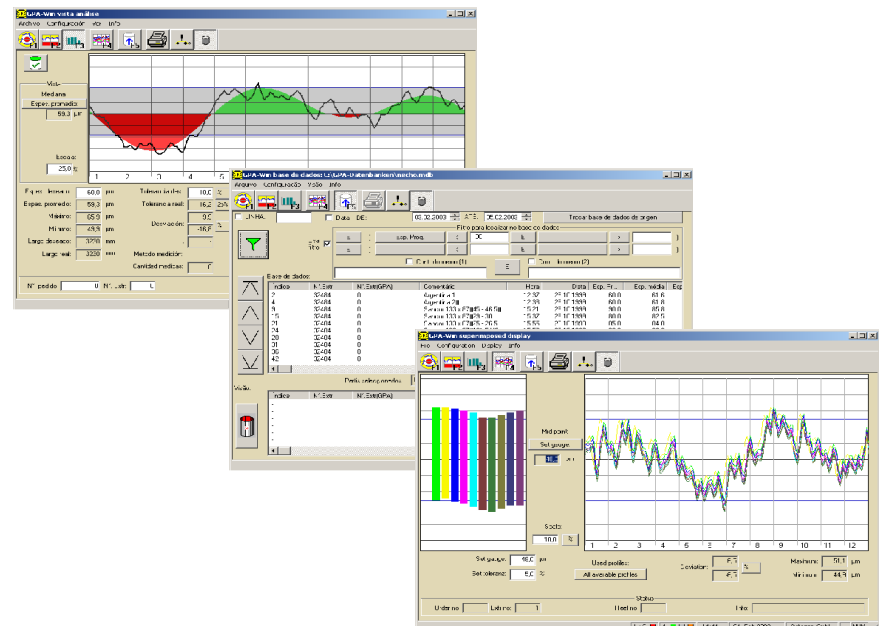


Fourier analysis

## Processing the profile:

Even after the measurement has been made, all set parameters may still be modified. False measurements such as pinholes may be eliminated with a cursor filter.

The software allows to select and superimpose on the monitor screen up to 10 profiles.



Selection of screen displays

Octagon  
Process Technology GmbH  
Nuernberger Straße 119  
D 97076 Wuerzburg

Phone +49 931 27 96 70  
Fax +49 931 27 47 19

contact@octagon-gmbh.de  
www.octagon-gmbh.de



Measurement unit GPA-C

- GPA-Cap with capacitive sensor for measurement without contact and equipped with micrometer for measurement as per ISO 4593.